

The South Carolina GARDENER

The Official Publication of The Garden Club of South Carolina, Inc.



WINTER 2026

VOL. 104 No 1

TABLE OF CONTENTS

President's Message	3
State Meeting	4
East Low Country District Mtg.	5
2025 Juried Art Contest	6-10
SCNPS	11
2026 Juried Art Contest Info	11
Garden Club & Council News	12-28
Memorial Garden	29
Veterans Day	30-31
Landscape Design School	32-33
Membership	33
Horticultural Symposium	34
GCSC	35

GCSC Affiliates

Anne Springs Close Greenway
 Black River Cypress Preserve
 Brookgreen Gardens
 Butterfly Monarchy Club
 Craig Farm Historical Preservation
 Foundation
 Daniel Stowe Conservancy
 Moore Farms Botanical Garden
 Piedmont Phycis Garden
 Riverbanks Zoo and Garden
 SC Bluebird Society
 SC Botanical Garden, Clemson
 SC Native Plant Society
 SC Wildlife Federation



GCSC President
Betty Wise Jackson
 1247 Augusta Rd.
 Trenton, SC 29847
 803-275-2664
 bettywisejackson@gmail.com

GCSC Treasurer
Marian Soule
 701 Gervais St., Suite 150-142
 Columbia, SC 29201
 803-233-2740
 Treas.GCSC@gmail.com

GCSC Headquarters
 Riverbanks Botanical Garden
 1300 Botanical Parkway
 West Columbia, SC 29619

**NGC Environmental Studies
 School & NGC Gardening School**
Karen Allen
 864-979-9562
 saludalake@aol.com

NGC Flower Show Schools
Cindy Thornton
 843-442-7104
 diverdana1@aol.com

NGC Landscape Design School
Paul Gilson
 609-405-1249
 pgilson@verizon.net

NGC President
Donna Donnelly
 Elloree, SC
 ddon21@aol.com

SAR Director
Linda Howle
 Darlington, SC
 howlelinda@yahoo.com

*Pictured on the cover Orchid in bloom in February on a tour
 to Carter and Holmes Orchids by Rebecca Garcia*



My Dear Fellow Gardeners,

Happy New Year! As the calendar turns to January, the world outside might seem dormant, but in the heart of every true gardener, the season is just beginning. This quiet month gives us the perfect opportunity to pause, reflect, and prepare for the abundance that is to come.

It's important to take a moment and reflect on the previous gardening year. We certainly had our share of triumphs and challenges in South Carolina—from those spectacular spring bursts to the persistent summer heat. Every bloom, every wilted leaf, and every successful harvest offered a valuable lesson. Perhaps we learned which cultivar handled the humidity best, or maybe we discovered a new shade-loving corner in the yard. Let us carry the wisdom gained from those experiences forward. We thank the old year for its gifts of growth and the beauty it allowed us to nurture, and we prune away the regrets just as we prune a winter rose—to make way for vigorous new growth.

Now, we enter the time of the quiet promise. The soil may be cool, and the days may be short, but our work is vital right now. This is the season for the soul of the gardener: the seed catalogs are piled high, the notebooks are open, and the vibrant colors of next spring are already taking shape in our minds.

Take this time to plan with intention. What do you want your garden to look like in May? Review your notes, chart your rotations, and research new varieties. Sharpen your tools and ensure your supplies are ready. The act of planning is an act of hope; it is the fundamental belief that the sun will shine, the rain will fall, and our small efforts will yield magnificent rewards. We are not just dreaming; we are laying the groundwork for beauty in 2026.

I look forward to another year of learning, sharing, and fellowship with all of you. The Garden Club of South Carolina remains committed to promoting the love of gardening, floral design, and civic and environmental responsibility across our beautiful state.

Wishing you a deeply restful and wonderfully imaginative start to the New Year!

With Warm Regards,

Betty Wise Jackson
President, Garden Club of South Carolina, Inc.

Butterflies... Come Flutter with me!



SAVE THE DATE

GARDEN CLUB OF SOUTH CAROLINA
STATE MEETING
APRIL 23, 2026
10:00 AM

REGISTRATION AND
CONTINENTAL BREAKFAST
8:30 AM

RIVERBANKS ZOO AND GARDEN
MAGNOLIA ROOM

BOARD OF DIRECTORS' MEETING
APRIL 22, 2026
2:00 PM

GARDEN CLUB COUNCIL OF
GREATER COLUMBIA BUILDING

East Low Country District Meeting 2026

The East Low Country District 2026 Meeting will be held on March 11 at St. James Center, 1872 Camp Road, James Island. There is ample parking and handicap access at the front and rear. Come enjoy lunch, programs and the ELCD Awards presentation. Door prizes, raffles and Silent Auctions too.! The host clubs, Alhambra of Mt Pleasant and Magnolia of Johns Island, are planning a great event at this peaceful and historic site near Charleston, SC.



Save the date - March 11, 2026. Join us under the oaks at the beautiful St. James Center



Joan McDonald, ELCD Director

Juried Arts Award Contest

By: Sherri Bardsley

2025 was a great year for the Juried Arts Award Contest, with twice as many entries as the previous year. Juried Arts Chairs Sherri Bardsley and Darla Oathout received entries from across the state, and even some from the newly- formed garden clubs. Winning entries were displayed during the 2025 GCSC Convention held at the Embassy Suites in Greenville. A big thank you to all who participated. Winners are shown below.

Juried Arts Best in Show

Donna Freely



Juried Arts

Mixed Media



1st Place

Pam Anderson

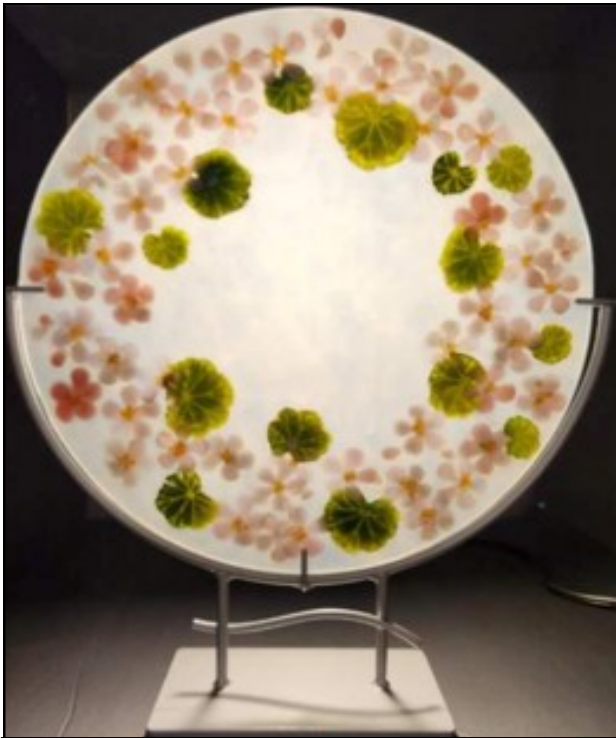
Gardening on the Cay



2nd Place

Melanie Jangro

Magnolia Garden Club of John's Island



3rd Place

Kathleen Murphy,

Palmetto Garden Club of Mt. Pleasant



Honorable Mention

Tracy Doyle

Palmetto Garden Club of Mt. Pleasant

Juried Arts Drawing



1st Place
Nancy Stone
Gardening on the Cay



2nd Place
Barbara Aldrich
Country Gardeners of Aiken



3rd Place
Deb Atkins
Camellia Garden Club of Greater Charleston



Honorable Mention
Lois Graham
Gardening on the Cay

Juried Arts Painting



1st Place

Marianne Stillwagon
Hardeeville Garden Club



2nd Place

Mary McCarthy
Alhambra Garden Club



3rd Place

Francis Harris
Leaf and Petal Garden Club



Honorable Mention

Barbara Aldrich
Country Gardeners of Aiken

Juried Arts Photography



1st Place

Robin Clark

Springfield Garden Club



2nd Place

Jean Niles

Garden Trail Garden Club of Anderson



3rd Place

Martha Ladd

Winnsboro Garden Club



Honorable Mention

Mike Brewer

Camellia Garden Club of Greater Charleston

In honor of GCSC President Betty Jackson and her love of butterflies, affiliate GCSC member, the Grand Strand Chapter of the South Carolina Native Plant Society, would like to feature our state butterfly, the **eastern tiger swallowtail** (*Papilio glaucus*). These large butterflies with wingspans of 3 to 5 inches are found across the state. If you see a dark-colored version, it is always a female. These beauties require native sweet bay magnolias (*Magnolia virginiana*), wild black cherries (*Prunus serotina*) and tulip poplars (*Liriodendron tulipifera*) for laying their eggs. Please join us in protecting our native species.

Learn more at SCNPS.ORG

Photo by Babs Johnston, Driftwood Garden Club.



JURIED ART CONTEST 2026

SUBMISSIONS ARE DUE MARCH 1

[PRINT the JURIED ART APPLICATION FORM](#)

[UPLOAD YOUR ORIGINAL ARTWORK'S DIGITAL PHOTO](#)

Theme: “Butterflies—Come Flutter With Me”



Entries are limited to Federated Garden Club Members Only.

[Garden Club of South Carolina Inc - Juried Art Contest](#)

87-year Commitment to the Beaufort National Cemetery

West Low Country District, Sea Island Garden Club,

Submitted by Stuart Heath



Beaufort National Cemetery is one of six national cemeteries established by President Lincoln in 1863 for the re-interment of Union soldiers and sailors who died in the region. Beaufort National Cemetery is the resting place of more than 7,500 Civil War casualties, both Union and Confederate, in addition to the veterans who are buried in the cemetery yearly.

As early as 1938, one year after Sea Island Garden Club was formed, the Civic Committee members of the newly formed club were corresponding with the United States War Department regarding the Beaufort National Cemetery. General improvements to the cemetery landscaping in the early 1900s were made as a result of that correspondence.

Sea Island Garden Club's work at the National Cemetery continued throughout the decades. Fast forward to today - 87 years later, club members continue to work hand in hand with the staff at the Beaufort National Cemetery. For many years, our club has tended to the Committal Burial Service Shelter area located at the end of the Avenue of Palmettos, where hundreds of services are held yearly.

Even during COVID, members made sure that the area was maintained. The committal pavilion is used frequently. It is an important part of the Beaufort National Cemetery, and members take pride in their efforts to maintain and beautify the shelter area by planting and tending seasonal flower beds. Not only do our efforts honor veterans, but the cemetery is a much-toured site by visitors to Beaufort and the Low-country. Because we have been assigned a high-profile area that is used weekly, we devote time and resources monthly to this important project.

This partnership with Beaufort National Cemetery has been, and continues to be, an ongoing commitment by the members of the Sea Island Garden Club.

87 years!

Travelers Rest Garden Club Creates Downtown Fall Displays

Submitted by Rose Mary LeBlanc



Travelers Rest Garden Club members Rose Mary LeBlanc, Chere' Edwards, Joan Powell, Carol White, and Sue Stancik enjoyed a sunny October morning arranging cornstalks, hay bales, pumpkins, and mums into pleasing Fall displays at 5 locations on Main Street in downtown Travelers Rest. Orange bows made by Chere' Edwards added the finishing touch to the displays.

TR Public Works again supplied decorative materials for club members to create attractive Fall displays, enhancing Travelers Rest's small-town charm. Club members value their role in supporting the community.



Alhambra Garden Club Donates to Horticulture Program

Submitted by Barbara Hess, Past President, Alhambra Garden Club

Alhambra Garden Club (AGC) presented the East Cooper Center for Advanced Studies (CAS) Horticulture program a \$700 donation for the second year in a row October 10. This event celebrated the relationship between the two organizations. Just after the final bell rang to let students out of school for the half day that Friday, members of AGC, students in the school's horti-



culture program, program teacher Paul Millar and principal Jeffrey Blankenship came together in the lobby of the CAS building for the presentation of the oversized check. This donation helps fund more seeds and tools and equipment purchases for the students throughout the year. AGC also offers advisement to the teacher and students, seed and pot donations, gardening book donations and supports the students' bi-yearly plant sales. In his fourth year,



Mr. Millar, a former horticulture program student, came back to the school as the program's lead after working as a tech for a vegetable breeder. "It just warms my heart that we got 10 plus members of the garden club here on a rainy Friday, half day, fighting student traffic and five students staying after class. It's awesome that everybody came together and made this happen," Millar said. The oversized check will be placed in the trophy case near the program classroom. Former AGC president Barbara Hess added, "This is an opportunity for the members in the club and for Mr. Millar and the principal and students to see how we're supporting them and want them to continue to be educated. "



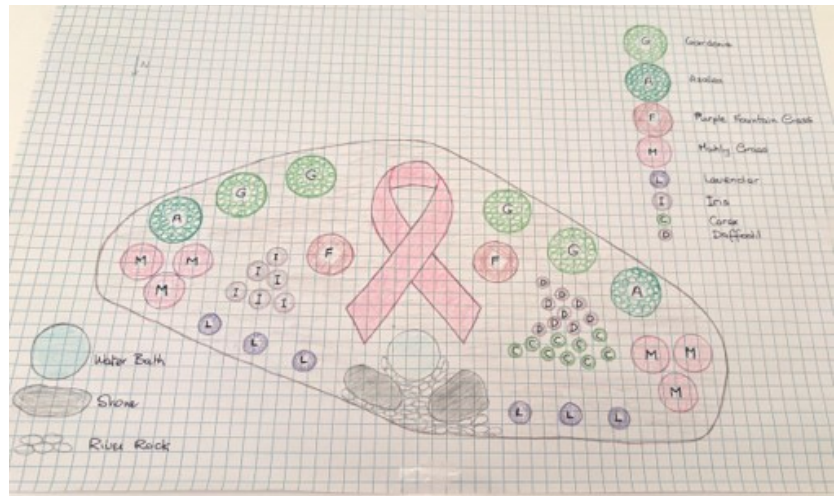
Alhambra Garden Club – East Low Country District

By Nancy Wood

As leaves begin to turn and temperatures begin to drop, we Southern Gardeners feel the need to be outside. Nature calls us to refurbish our gardens; to move some things and plant new ones. Alhambra Garden Club program committee challenged its members to design an imaginary space. It was to replace an actual location at Brookgreen Gardens where the Craig Mitchell Smith's "Gardens of Glass" exhibit is being uninstalled.

Our instructions were as follows:

- Study any combination of perennials, annuals and shrubs for inclusion in an egg-shaped bed measuring 24' x 12'.
- Include something pink, flowering every season in keeping with "Plant It Pink."
- Design to scale; botanical names of plants and plant size to be included.
- The site is Partial to Full Sun and bordered by trees and a path.
- Money was **NO Object**.



This exercise was to challenge each of us to study all the requirements and agree on a "Team Design" to be presented at the regular November meeting.

You should have seen the stacks of books each one brought to our Team Planning Meetings and the many varied ideas for the space.

A mixture of ideas and plant materials were chosen. One design featured a Charleston Bench; another a water feature; a third included a center design in the shape of the cancer ribbon planted in a mass of Purple Fountain Grass. The fourth design featured three obelisks covered in climbing roses. The plant material chosen ranged from a typical Southern Camellia/Azalea/Rose/Phlox design, to a totally whimsical Dr. Seuss layout of Old English climbing roses, a Weeping Cedar Spruce and Joe-Pye-Weed.

All this was done outside of our regular meetings and proved to be a fantastic "Learn and Fun" experience.

Greenville Council of Garden Clubs

Annual Garden Tour

May 15 & 16, 2026



Mark your calendars! This year's tour gardens are sure to delight and charm any garden enthusiast. Themed "Carolina Outdoor Living," the Simpsonville area tour will showcase lush gardens with fun outdoor amenities and allow insight into each owner's garden philosophy.

Featured properties range from a 40 plus acre bucolic country estate to homes with meandering paths, garden rooms, water features, and quirky highlights, to smaller properties packed with personality and function. These gardens will be sure to inspire you!

Above- Paths leading to garden rooms and water features highlight this tour.

The Council's annual garden tour is our largest fund raising event of the year. Proceeds fund educational programming and the maintenance of the historic Kilgore-Lewis House, an accredited arboretum, and 5 acres of gardens which are open to the public. The public is welcome to visit at 560 North Academy Street, Greenville, SC 29601. Docent tours are held Wednesday to Friday for 10 am to 2pm each day.

Tour dates are May 15 and 16 from 10am to 4pm each day. See Kilgore-Lewis.org for more information and to purchase tickets in advance.



Right- A small slice of a delightful formal garden.

Seneca FFA Students are “Born to Lead!”

By Laurie Flanagan, Lake and Hills Garden Club, West Piedmont District

Twelve Lake and Hills Garden Club (LHGC) volunteers supported the Seneca High School Future Farmers of America (FFA) at the Carolina Foothills Heritage Fair on September 26 at the Farm Center in Seneca. Garden Club and FFA members helped lead tours around the Fair, showcasing all the available exhibits and demonstrations, including: canning and beekeeping displays; cattle, lamb, goat, and rabbit shows; antique engine and blacksmith demonstrations. Of course, what fair would be complete without carnival rides and a hay bale decoration contest! LHGC volunteers also provided water to thirsty fairgoers and lunch to the many FFA students who worked the event. In fact, LHGC member Julie Hoppock and Past President Nan Donovan cooked a total of 200 hot dogs over a blazing grill on a hot fall day. The rest of the LHGC volunteers served the food to the crowd of very hungry teenaged volunteers.

Mariah Swygert, Seneca High School’s FFA Advisor and Agriculture teacher, is a bundle of enthusiasm with a passion for teaching. She leads and challenges her students so well that Debbie Brune, LHGC President, commented, “I was so impressed with these young people. They all were so appreciative of our help and took the time to individually thank us. I am even more committed to our sponsorship of this group after witnessing these kids in action, and I am convinced that our support of the FFA is well worth it.”

At the Fair, FFA and Garden Club volunteers all wore identical t-shirts emblazoned with the words, “Born to Lead.” More than a t-shirt slogan, those words clearly reflect the national FFA motto: “Growing the next generation of leaders who will change the world.” How wonderful that the LHGC had the opportunity to see that motto in action - respectful young people who work hard and gain joy by doing something meaningful together. Those teens, indeed, are “Born to Lead.”



LHGC President Debbie Brune and Past President Nan Donovan were truly “Born to Lead” at the recent Carolina Foothills Heritage Fair.

RIVERLAND TERRACE GARDEN CLUB

TREX BENCH

Submitted by Sandee Bauer

In 2024-2025, Riverland Terrace Garden Club was excited to participate in a new project allowing members and community partners, Food Lion Grocery Store and Roper Pain Center on James Island, to collect soft plastic. The collaboration joined with TREX wood alternative manufacturer to transform the plastic into an outdoor bench for our club.

Receptacles were placed at 3 locations in the James Island community for collection of items such as packaging and grocery bags. The chairperson of that committee and member volunteers then collected the donated plastic; it was then sorted for appropriateness, photographed, weighed and delivered to our designated Harris Teeter Grocer, a TREX partner, who then sent it on to TREX.

Once we collected 1,000 pounds of plastic in the defined one year period, TREX delivered a wood alternative bench to our club. The decision was made to place the bench in our native garden at the site of our windmill. This garden is undergoing an update to its landscape design, incorporating the Red Maple tree planted last year for Arbor Day, along with some of the existing plants and the new bench!

The bench is positioned to have a view of the Intracoastal Waterway and Plymouth Avenue Park & Playground. In this way, we were able to go green outside of the garden and do our part in the community to reduce plastic waste and protect the environment. The club is continuing this project in 2025-2026.



Riverland Terrace Garden Club Recognizes Blue Star Markers

Submitted by Sandee Bauer

Riverland Terrace Garden Club wished to recognize Blue Star Markers especially in November as we think about our veterans. These markers were established in 1944 to be a living memorial for those men and women who have served.

The Riverland Terrace Neighborhood celebrated its 100th year this past November with a special historic home tour and film documentary. Our club's Blue Star By-Way Marker sits near our iconic windmill, which was on the tour. The marker is visible to all visiting this area as they pass by.

For Veterans Day and the tour, RTGC cleaned the marker, trimmed overhanging limbs of the

near by tree and placed a new wreath on the marker. As part of our November 4th monthly membership meeting, a handout was provided and read to attendees explaining the history and significance of the markers. Having several new members this was a good time to learn and remember how garden clubs honor those in our communities that have served and are serving in the armed services.



Travelers Rest Garden Club Creates Gardens at Historic Spring Park Inn

Submitted by Rose Marty LeBlanc and Denise Frick, West Piedmont District

One of the goals of Travelers Rest Garden Club is to promote and showcase the benefits and beauty of gardening with native plants. Our club believes it is our civic duty to contribute our gardening skills to the community where possible. In October 2025, our club took action to achieve this goal by planting two gardens at the historic Spring Park Inn: the Ramp Garden and the Shed Garden.



Spring Park Inn is one of the oldest inns in Greenville County and is listed on the National Register of Historic Places. Built in the early 1820s as a private residence, it later operated as an inn until 1941, when it returned to being a private home. Located in downtown Travelers Rest on Buncombe Road, which served as a prominent thoroughfare and primary trade route to the resorts in the cool mountains of North

Carolina, this historic site was donated to the Travelers Rest Historical Society in 2020. After extensive renovations, it opened to the public for tours in October 2025.

The Ramp and Shed gardens are situated along the handicap ramp at the back entrance of the Inn. The aim of these gardens is to welcome visitors to the Inn while also serving as an example of native plant gardening. According to the National Wildlife Federation, a landscape should consist of at least 70% native plants to effectively support wildlife. We are proud to say that both of our gardens meet this criterion. The goal is to educate the community about the benefits of native plants to wildlife and the environment.

Installing the gardens was quite a process, but it was made easier by the participation of many club members, along with two husbands, one son, and one grandson, who turned out on an October morning to transform grass and dirt into thriving gardens.



TRGC Creates Gardens at Historic Inn– continued

First, we removed Bermuda grass from the Ramp Garden using hand tools, and from the Shed Garden using a tiller. Next, we amended the soil in the Ramp Garden with compost sourced from Furman University’s farm. Once the garden beds were prepared, the enjoyable part of planting began. Members took delight in getting their hands in the soil to complete the gardens.

We will continue to care for these gardens and assist the Travelers Rest Historical Society with tasks such as watering and weeding.



Plant List:

Ramp Garden

- 5 Darrow’s Blueberry Shrubs, *Vaccinium darrowi*
- 4 Stokes Aster, *Stokesia*
- 4 Blue Mistflower or Wild Ageratum, *Conoclinium coelstinum*
- 2 Purple coneflower, *Echinacea purpurea* (existing on the Inn property)
- 6-8 white bearded irises, *Iris x germanica* (existing on the Inn property)

Shed Garden

- 1 Maraschino Sage, *Salvia greggii*
- 2 Variegated Society Garlic, *Tulbaghia violacea* “Variegata”
- 4 Purple Coneflower, *Echinacea purpurea*
- 6-8 White bearded iris, *Iris x germanica*
- 3 New England Aster, *Symphotrichum novae-angliae*
- 1 Great Coneflower, *Rudbeckia maxima*
- 4 *Penstemon digitalis* “Husker Red”
- 3 Black Eyed Susan, *Rudbeckia hirta*

TRGC Creates Gardens at Historic Inn– continued



Dataw Garden Club Plants It Pink on Dataw Island

Submitted by Becky Terry, West Low Country District

Dataw Garden Club proudly participated in the Garden Club of South Carolina's "Plant It Pink" initiative this fall, bringing together garden club members and Dataw residents to honor those touched by breast cancer. Our efforts were twofold: "Garden of Hope," in honor of survivors, and "Forever in Bloom," a touching tribute in memory of loved ones lost, both represented by a newly planted vibrant bed of pink snapdragons. Yard signs were erected with the names of both displayed to serve as daily reminders of courage, love, and community, thriving under the Low-country sun and offering a place of reflection and renewal.



In October, our club again joined the broader Dataw community in supporting Pledge the Pink Breast Cancer Walk, which drew more than 1,500 walkers for a 10-mile journey across the island. Dataw Garden Club hosted a lively photo and cheer station, where we handed out refreshing rosé wine shots and plenty of encouragement. Laughter, pink ribbons, and cheers filled the air as walkers passed by—proof that hope and support bloom strongest when shared. Our station was situated in our butterfly garden, framed by the newly planted pink snapdragons and the memorial yard signs.



Looking ahead, our members are already preparing for one of Dataw's most beloved traditions—our annual Luminary Weekend. The theme for 2025 was "Night of Illumination". Luminaries lit up our historic tabby ruins as well as our beloved Butterfly Garden. It's a magical event that blends beauty, remembrance, and community spirit—values that are at the heart of our club. From pink petals to candlelight, Dataw Garden Club continues to celebrate life, honor, memory, and nurture hope—one garden at a time.



AZALEA HOME AND GARDEN CLUB OF FLORENCE CELEBRATES NATIONAL GARDEN WEEK

Submitted by Elizabeth Tolson, East Sandhills District

Azalea Home & Garden Club of Florence celebrated National Garden Week with a variety of speakers and activities at the Quinby Community Center. We began with a beautiful detailed history of the founding of Azalea Home and Garden Club by Helen Sims, past president. Founded in 1948 as the Iris Garden Club, the name was changed to the Azalea Home and Garden Club in 1969. Azalea Home and Garden Club has the distinction of being the first Federated (1974 582ES) African American garden club in South Carolina.

The group enjoyed fresh garden fruits and vegetables from Ellerbe Vegetable Farm. Guest speaker, Harold Ellerbe, owner of Ellerbe Vegetable Farm, shared that as a young man he was



Mr. Harold Ellerbe



Ellerbe Vegetable Farm

over-weight and needed to change his eating habits. He started eating vegetables, but this was costly to the family's food budget. Living in rural Timmons-ville, South Carolina, Mr. Ellerbe, began to experiment growing vegetables. Growing fruits and vegetables for his and the family's health became a business, The Ellerbe Vegetable Farm! He brought with him squash, cabbage, carrots, watermelons, grapes, and potatoes that members were able to purchase.

The group also had fun making flower pot decorations with Positive Petal Pollinators. The flower pots were filled with positive words on colorful petals. We also enjoyed garden bingo and door prizes.

Benefits of Spending Time with Nature

Submitted by Monica Rylski, Gardening on the Cay



The allure of autumn has arrived in the Carolinas, and we have entered the grand finale of the previous season. Nature is revealing to us how lovely it is to change and let go. Research shows a strong relationship between spending time with nature and its positive effects on our psychological outlook, physical, and spiritual well-being. There is an increased interest in interacting with our natural environment, and individuals report higher levels of happiness, decreased depression, improved sleep, and lower levels of stress. People who regularly visit nature were two times more likely to report their lives as worthwhile, having meaning, and feeling purpose. Interestingly, even passive engagement, such as viewing images of nature or having a natural view from our home, work, or hospital room, increases our mood and has a therapeutic effect that accelerates healing. We are learning that our natural environment plays a significant role and impacts how we feel. As we reconnect and sow quality time in nature, we reap its rewards exponentially. When close to nature, we are invited to relax, quiet our

minds, and open up to creativity. You can fully immerse yourself and engage all of your senses. We shift our attention externally and become aware of the present world around us. We gain calmness and inner strength because we are refocusing and entering rest. We are being refreshed and restored through leisure and recreation.

There is a presence and power in our natural surroundings to be received freely. There are invisible qualities, such as stillness, peace, strength, endurance, renewal, balance, and harmony, that are reflected in the presence of the landscape all around us. Nature is telling a story, and it is new and different every day. It is living art.

We can enrich our lives by connecting to the outdoor world and appreciating the preciousness of creation and ourselves. Some recharge by visiting our forests (for – rest) and feel the gentle breeze that reaches the height of the tree canopy. Others feel alive as they ascend to the top of our mountains and marvel at the breadth of the horizon before them. Some ponder the depths of our lakes and the ocean below during the golden hour sunsets. While others are captivated by the length of the sunbeams from our vibrant southern sunrises. We can enjoy tranquility through the haven we created in our own backyards and admire the cheerful blooms in our outdoor space. A symphony is being created daily by every living thing and their unique song.

I encourage you to go outside in the fresh, crisp air and look up at the cotton candy clouds that fill our sky day after day. Try new experiences or revisit favorite vistas and familiar trails because you may just encounter the unexpected and create an unforgettable memory. There is something for everyone to explore, and adventure awaits you and your loved ones. Our home is a beautiful, diverse, and wonderful world. Nature, in its simplicity and purity, was created for us to enjoy.

Tega Cay NEWS ALERT

Blooming Beyond the Garden

GOTC Launches New Advice Column in the Tega Cay Sun



Gardening on the Cay contributing writers:
Carol Holden; Monica Rylski; and Debbie Wey

First Published 2025

“Extra, Extra, read all about it!”

Submitted by Gina Ginther, Gardening on the Cay

In 2024, Gardening on the Cay was offered an opportunity to have a regular column in the *Tega Cay Sun*, a local community newspaper published in print and online. GOTC jumped at the opportunity to provide informative, seasonal, science-based gardening education to our community! Three members of Gardening on the Cay dove right in and, after contacting the Editor, chose topics and formulated a monthly schedule.

On a rotating basis, GOTC members Carol Holden, Monica Rylski and Debbie Wey

sharpen their pencils and submit articles covering a number of gardening topics. You can enjoy their work by visiting TegaCaySun.com.



An Evening of Creative Inspiration “The Art of Floral Design”

Submitted by Gina Ginther, Gardening on the Cay

On October 28th, members of Gardening on the Cay were provided with an evening of creative inspiration and beauty! The club was honored to welcome Linda Howle, NGC Master Flower Show Judge; GCSC South Atlantic Regional Director and past GCSC President. Linda transformed the meeting room into a full scale floral design stage. From buckets of beautiful blooms on white draped tables, she created six breath taking arrangements while teaching the fundamentals of design and the basics of flower show judging. Members are still chatting about this program!



Gardening on the Cay

Honors Beloved Community Volunteer

Submitted by Gina Ginther

On September 12, 2025, Susan Uhlott, a long time PAR Garden volunteer at the Anne Springs Close Greenway, was honored as a GCSC Garden Hero at an early morning surprise gathering at the Greenway. Susan was named a Hero for her dedication and stewardship, inspiring others with distinguished leadership and community service. Susan has given time and provided tireless support to gardens that provide food for people in the community. Her steadfast and deeply helpful work supporting the team of Gardening on the Cay members who teach preschool children at the Greenway has been priceless, as well.



Susan receives her GCSC Garden Hero certificate from Campaign Chair Gina Ginther.



Anne Murray Randolph surprises Susan with a celebratory gift.

Surrounded by members of Gardening on the Cay, Susan was presented with an official Hero's certificate, a beautiful bouquet of flowers, and a personal gift of garden pruners from GOTC member Anne Murray-Randolph, who has worked closely with Susan for years. To read all about Susan's accomplishments, please read all about her in the Summer 2025 edition of *The SC Gardener!*



Celebrating Success at the Tega Cay Elementary School Monarch Way Station Pollinator Garden

By Gina Ginther & Pam Anderson, Gardening on the Cay



The Tega Cay Elementary School Monarch Way Station Pollinator Garden serves as a crucial pollinator habitat while offering continuous educational opportunities for youth and fostering an understanding of responsible gardening practices. The TCES Monarch Way Station Pollinator Garden was installed by Gardening on the Cay in the spring of 2017 and is recognized as an official Monarch Way Station (#16477) by MonarchWatch.org. The garden actively engages students in the care of plants, particularly in the challenging contemporary environment for birds, bees and

butterflies. Ongoing maintenance of the garden site and entrance planters is diligently carried out by GOTC, under the leadership of Ericka Kauer and her committee members, Peggy Gray, Ilene King, Nancy Stone and Gina Ginther.



GCSC Memorial Garden

1919 Lincoln St., Columbia, SC

Nancy Bunch, Chairman



Are you looking for a permanent, heartfelt way to memorialize or honor someone who served or is presently serving in the armed forces? Tribute brick pavers not only serve as a celebration of friends and family but also provide building blocks for our future, helping to ensure that GCSC Memorial Garden will continue to provide a place of dignity and serenity for the citizens of South Carolina, our community, and all who enter its gates.

Please donate an [engraved brick paver](#) in honor or memory of a family member or loved one. Your donation will become a part of the Memorial Garden's history for years to come. The Garden Club of South Carolina, Inc. is a 501(c)3 (non-profit) corporation; therefore, all donations are tax deductible.

Thank you, in advance, for your contribution!

TO RENT THE MEMORIAL GARDEN FOR YOUR EVENT, CONTACT:

Sarah Truel, 803-737-2235 or struel@scprt.com

Veterans Day in the Memorial Garden

By: Nancy Bunch, Memorial Garden Trustees Chairman

Veterans Day in the Memorial Garden was observed on Friday, November 7, as GCSC Quilts of Valor recipients were honored, including Bruce Cook, 100 year-old World War II Veteran. The 80th anniversary of Mrs. Sarah Porter Smith Boylston's gifting of the Memorial Garden to GCSC was also celebrated. Donna Donnelly, President of National Garden Clubs, Inc. and an Ellore Garden Club member, was keynote speaker. Betty Jackson, GCSC President, welcomed The Honorable Hugh Weathers, SC Commissioner of Agriculture, as soloist. American Legion representatives included 2nd Vice Commander Patricia Dandy, Post 4 Vice Commander Harold Donnelly, and Mike Mancarie. Heather Hawkins, SC 250 Grants Manager, updated guests regarding American Revolution activities within the state. The Memorial Garden Trustees hosted a lovely reception following the program.



NGC President Donna Donnelly, WW II Veteran Bruce Cook, American Legion Commander Harold Donnelly



Quilts of Valor recipients Bruce Cook, WW II US Army Air Force, West Columbia, SC; Annette Cunniffe, Air Force, Lexington County Garden Club; Margaret "Peggy" Dale, Air Force, Dataw Garden Club; Brianna McDowell, Navy, Quail Valley Garden Club; Milisa Peachey, Air Force, Ivy Garden Club; Tamara Przylera, Army, Myrtle Beach Garden Club; Kim Toogood, Air Force, Columbia Garden Club; Jayne Tupper, Army, St. Matthews Garden Club; and Sandra Waskowski, Navy, Clemson Garden Club

Veteran's Day in the Memorial Garden– continued



Bruce Cook, WW II Veteran
Betty Jackson, GCSC President



Bruce Cook and David
Stoudenmire, Past President



Harold Donnelly, American
Legion, and Kim Toogood,
Quilts of Valor Recipient (Air
Force, Columbia Garden
Club)

Fall 2025 Landscape Design School

By: Paul Gilson, Chairman, GCSC Landscape Design School

The 2025 Fall program of the Garden Club of South Carolina's (GCSC) Landscape Design School was held on Tuesday, November 11 and Wednesday November 12 at Charles Towne Landing State Historic Site in Charleston, SC. In addition to the 80 attendees, we were honored to welcome and include NGC President Donna Donnelly, GCSC President Betty Jackson, GCSC 1st. Vice-President Jan Burch, and Indiana State President Wanda Zahrt as well.

President Jackson welcomed the attendees on Tuesday morning. After her opening remarks our instructors presented topics on **Contemporary Trends in Landscape Design, Community Participation in Landscaping Projects, and Guidelines for Evaluating Landscape Designs.** Following lunch, the attendees traveled to downtown Charleston to visit and evaluate 5 public garden/parks, culminating in a "Happy Hour" event at a local restaurant.

On Wednesday morning, NGC President Donna Donnelly opened the session and shared information related to her NGC strategy and initiatives. President Donnelly then joined GCSC LDS Chairman Paul Gilson in recognizing the 6 most senior members who have achieved Master consultant status: Susan Epstein-Charleston, Karen Prewitt-Charleston, Marie Land-Azalea of Manning, Beth Smith-Lugoff, Ginny Honea-Azalea of Manning, and President Donnelly-Elloree. Wednesday's instructors then covered the topics of **Water Resources: Design & Conservation, Suburban Residential Design, and Development of Community Gardens.**



The Three Presidents, L to R:
Wanda Zahrt ,Betty Jackson,
Donna Donnelly



Master Consultants recognized, L to R:
Chairman Paul Gilson,
NGC President Donna Donnelly,
Marie Land, Susan Epstein, Karen Prewitt,

Fall 2025 Landscape Design School—continued



Program in Session: Founders Hall,
Charles Towne Landing State Historic Site,
Charleston, SC

After the New Year we will begin planning the 2026 Program which is tentatively scheduled to be held the last week of October at Charles Towne Landing State Historic Site. If you live outside of the Charleston area, October is a perfect time to visit our beautiful city and combine your visit with our Fall 2026 LDS program.



Happy Winter from GCSC Membership!

Our gardens may be resting until Spring and gardeners may be taking a well-deserved break during this season, but Membership plans for The Garden Club of South Carolina continue. We hope to bring more information to you in the Spring about three or four new clubs we are “planting” right now in three Districts. As a reminder, please reach out to me at TDRanson@yahoo.com if you know of any non-federated garden clubs we might speak to about the GCSC opportunity.

Tara Ranson



**The Davidson Garden Club Presents
DAVIDSON HORTICULTURAL SYMPOSIUM XL**

40 YEARS:

Celebrating the Ever-Changing Garden

Are you seeking to renew your passion for gardening? Do you find yourself navigating an overwhelming array of garden literature, presentations, and media, yet still searching for meaningful guidance? You are cordially invited to join us as we answer these questions and celebrate four decades of growth and transformation. In honor of the enduring and ever-changing nature of the garden, we welcome you to celebrate with us.

Tuesday, March 10, 2026

Bryce Lane, NCSU Professor Emeritus, Producer/Host "In the Garden with Bryce Lane"
The Joy of Gardening: The Power of Plants to Change Your Point of View

Preston Montague, Landscape Architect & Artist
Towards Ecosystem Service Potential: A Framework for Decision-Making in the Garden

Rebecca Sweet, Garden Designer & Principal of Harmony in The Garden & Author
Refresh Your Garden Design: Simple Strategies to Wake a Weary Garden

Bobby Mottern, Director of Horticulture, Sarah P. Duke Gardens
The Sarah P. Duke Gardens: Where Craft and Nature Coalesce

For more info and to register online beginning December 15, 2025:

WWW.DAVIDSONSYMPOSIUM.ORG

The Garden Club of South Carolina, Inc.



A non-profit organization, GCSC is a force for good promoting all aspects of gardening, focusing on preservation and restoration of historic gardens, conservation and environmental protection of natural resources, education of members and youth organization, civic beautification, horticulture, and floral design.

Join us, and as a member of a Federated garden club you will be part of something BIG!

We are 4400 members strong, serving in 172 garden clubs within 7 Districts across the state of South Carolina. We are part of the South Atlantic Region and National Garden Clubs, Inc., the largest volunteer gardening organization in the world with 165,000 members in 5,000 garden clubs. The Garden Club of South Carolina affiliate members' goals align with our mission and objectives such as SC Native Plant Society; SC Bluebird Society; SC Botanical Garden at Clemson; Riverbanks Zoo and Botanical Gardens in Columbia; SC Wildlife Federation; Moore Farms Botanical Garden and Piedmont Physic Garden.

WE PROMOTE AWARENESS

We are stewards of the environment - making choices to protect pollinators and wildlife, conserve resources, and promote native plants and habitats to support them. We follow legislation to speak with a bigger voice on issues of environmental concern. We work to preserve and conserve, by identifying and restoring Historic or Legacy Gardens across the state, including Botanical and pollinator gardens. The Garden Club of South Carolina owns the Memorial Garden adjacent to the Governor's Complex in Columbia which was deeded in 1945 to become the first Memorial Garden in the United States to honor World War II veterans. This beautiful garden continues to evolve over time and is supported by individuals and garden clubs. We promote Environmental Awareness Initiatives such as recycling, upcycling, water conservation, and litter control.

WE EDUCATE

We offer National Flower Show Schools and Symposiums; Landscape Design Schools; Environmental Studies and Gardening Schools. Learn to put on a Flower Show or to be an accredited Flower Show Judge! Members enjoy fabulous, organized trips to world famous gardens. You will also learn about supporting Wildlife Habitats, The Blue Star Memorial Program, Carolina Fence Gardens, Native Plants and promoting National Garden Week and Arbor Day.

WE SUPPORT YOUTH GARDENING

We encourage the love of gardening, civic, and environmental responsibility in our youth. Local clubs promote youth activities throughout the year in their communities, including the sponsorship of Youth Garden Clubs. Clubs send campers to the highly regarded **Camp Wildwood** where the brightest conservation-minded students are invited to study wildlife and outdoor skills that are not taught elsewhere. The Garden Club of South Carolina partners with the SC Department of Natural Resources, The SC Wildlife Federation, and the Harry Hampton Memorial Wildlife Fund to ensure the camp's success. We also hold Youth Poetry and Poster Contests; and the GCSC promotes Scholarship opportunities for both High School and College students, awarding over \$20,000 in 2022.

BENEFITS OF MEMBERSHIP in a Federated club

We join together at the District, State and National level to accomplish more than we ever could individually!

- As a member, you receive a subscription to the GCSC quarterly magazine, *The SC Gardener*, delivered right to your inbox.
- You are automatically enrolled as a member of the National Garden Clubs, Inc (www.gardenclub.org) and can subscribe to *The National Gardener*, their quarterly magazine.
- You can access the "Members Only" space on the GCSC website (www.gardenclubofsc.org) to discover informative educational and leadership tools. Your club will enjoy learning the GCSC initiatives during each term to guide monthly programs, workshops, field trips and Yearbooks.
- State and National project grants are available only to Federated clubs. Club Award recognition and honors are offered at the District, State and National levels.

Along with lectures and seminars at the club level, annual State meetings and Conventions offer an opportunity for continuing education and networking with gardeners from across the state who will become your life-long friends



Contact us!

The Garden Club of South Carolina, Inc.
701 Gervais Street, Suite 150-142
Columbia, SC 29201
WWW.GARDENCLUBOFSC.ORG



Coastal District

District Director: Graceann Phillips

Assistant Director: Juanita Burnett

East Low Country District

District Director: Joan McDonald

Assistant Director: Annette Ellard

East Piedmont District

District Director: Denie Crowder

Assistant Director: Beth Waddell

East Sandhills District

District Director: Elizabeth Tolson

Assistant Director: Terri Brown

West Low Country District

District Director: Christy Sloan

Assistant Director: Mattison Bolen

West Piedmont District

District Director: Phyllis Roth

Assistant Director: Jenny Snipes

West Sandhills District

District Director: Margaret Axson

Assistant Director: Stephanie Cordum

The Garden Club of South Carolina, Inc.

501c3 non-profit organization

website: www.gardenclubofsc.org

4521 Members, 164 Garden Clubs,

17 Councils.

and 13 Affiliate Organizations

Mission The Garden Club of South Carolina, Inc., a non-profit organization, is a force for good that promotes all aspects of gardening, focusing on preservation and restoration of historic gardens, conservation and environmental protection of natural resources, education of members and youth organizations, civic beautification, horticulture, and floral design.

To submit articles, events, and items of interest to *The SC Gardener*, please send an email to

scgardenereditor@gmail.com

Submission Deadlines

Issue	Date
Winter	November 15
Spring	February 15
Summer	May 15
Fall	August 15

Submission Guidelines

- Articles to be plain text email or editable word document (.doc).
- Photos should be high resolution at least 300 pixels sent as a .jpg in as an email attachment.
- Email all materials to scgardenereditor@gmail.com
- Email Subject to include "Article for SC Gardener" and Club Name
- Email Body to include District, Garden Club, and submitter name
- Editor reserves the right to edit any article due to space constraints, duplication, clarity and accuracy.

The South Carolina Gardener is the official publication of The Garden Club of South Carolina, Inc., published quarterly and funded in part by Membership dues. *The South Carolina Gardener* has made every effort to ensure listings and information are accurate and assumes no liability for errors or omissions.

©2023 All rights reserved. No portion of this magazine may be reprinted without the express, written consent of the publisher.

Rebecca Garcia, Editor

Gay Nelson, Assistant Editor

The Master Calendar of Events
can be downloaded from the
GCSC Web Site:

[https://gardenclubofsc.org/
index.php](https://gardenclubofsc.org/index.php)